

M6 Wi-Fi 6 MESH SYSTEM

AX1800 Wireless Dual-Band Access Points

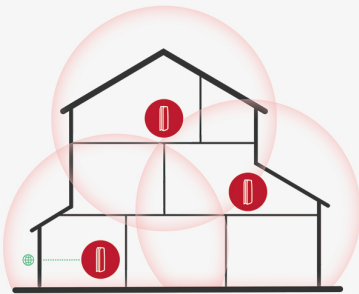
- ✓ EasyMesh
- ✓ IPv6
- ✓ Qualcomm



Powerful Mesh Network

EasyMesh Network

EasyMesh Compatible



Mesh Key Features

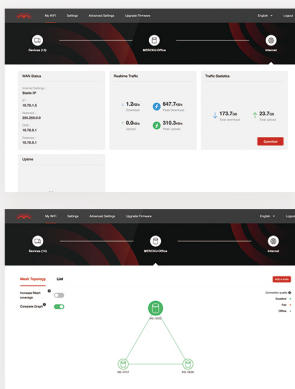
- Expandable and wireless
- Managed set-up
- Seamless client and device roaming
- Network and device intelligence

One System for All Homes

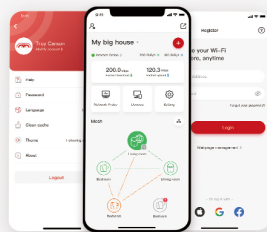
- Condominiums
- Townhomes
- Split-Level
- Bungalows

360° Network Management

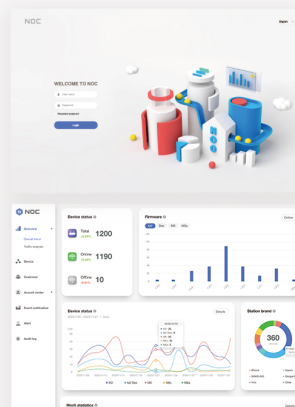
Web UI



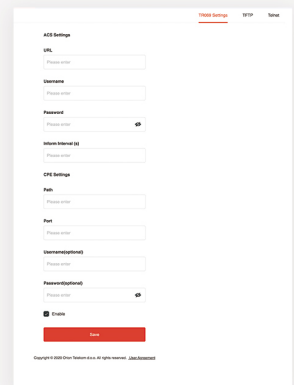
Mobile App



Network Operations Centre



TR-069



M6 Mesh Router Specifications



Hardware Features

Chipset	Qualcomm (Quad ARM Cortex A53 1.2 GHz)
Flash	1Gb NAND
RAM	512MB DDR3
Interface	1 x 1000Base - T Ethernet WAN Port 2 x 1000Base - T Ethernet LAN Port
Reset Button	1
Connect Button	1
LED	1
Power Supply	DC 12V / 1.5A 100-240V 50/60Hz
Dimensions	140(L) x 52.08(W) x 204.2(H) mm
Color	Pearl White/Maroon Red/ Cosmo Black

Optional accessories: Transparent series side shell set (Sapphire Blue/Tangerine/Fuchsia/Graphite Grey)

Network Management

TR-069	Yes
Remote Shell	Yes
Web WAN Access	Yes
NOC	Mercku proprietary

Smart Wi-Fi

Channel	Manual / Auto
Channel Width	20/40/80MHz
Smart Connect	Yes
Mobile App	iOS / Android
Parental Controls	Yes (limits, scheduling, blocking, etc.)

Advanced Wi-Fi

Mesh standard	EasyMesh
Tx Beamforming	Yes
Band Steering	Yes
AP Steering	Yes
Client Steering	Yes

Wireless Features

Wireless Rates	2.4 G – 573 Mbps 2 x 2 5 G – 1201 Mbps 2 x 2
2.4 GHz	2T x 2R (IEEE 802.11b/g/n/ax)
5 GHz	2T x 2R (IEEE 802.11a/n/ac/ax)
Antenna	High-performance WHEMS
Antenna Gain	2.4G: 5.0 dBi, 5G: 5.0 dBi

Security

Encryption	WPA / WPA2 / WPA3
VPN Client	PPTP / L2TP / OpenVPN
VPN Passthrough	Yes
DMZ	Yes
WAN MAC Clone	Yes
Firewall	Yes
Guest Wi-Fi	Yes

Connection

WAN Access Mode	PPPoE / DHCP / Static IP
STA Access Mode	DHCP / Static IP
STA ACL	URL filter/Mac filter/Rate limit/Time limit
Internet Protocol	IPv4 / IPv6
DDNS	DynDNS / Oray
LAN DHCP Setting	LAN IP / IP pool / Lease
Static DHCP lease	MAC and IP binding

Basic Settings

Bridge Mode	Yes
System log	Yes
Customized DNS	Yes
Network Diagnosis	ping, traceroute, nslookup
Upgrade Firmware	Online / Offline
Time zone	Yes
Speed test	Internet > Router; Router > Mobile

